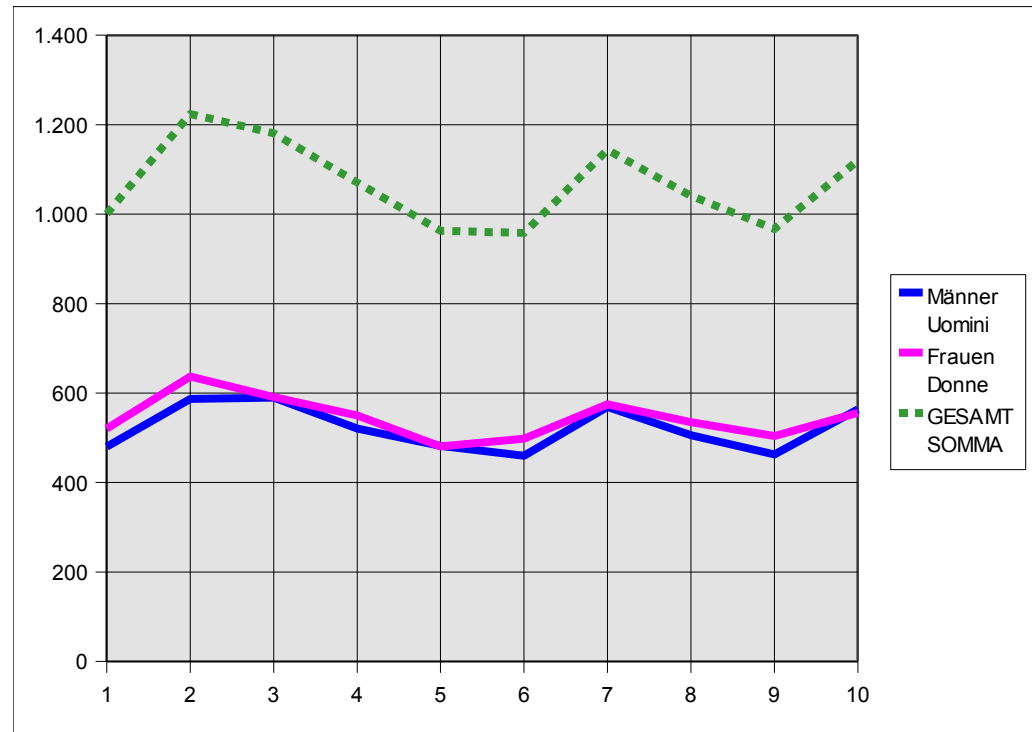


# LANDTAGSWAHLEN 2008/ELEZIONI PROVINCIALI 2008

## ÜBERSICHT/PROSPETTO

### Wahlberechtigte/Elettori

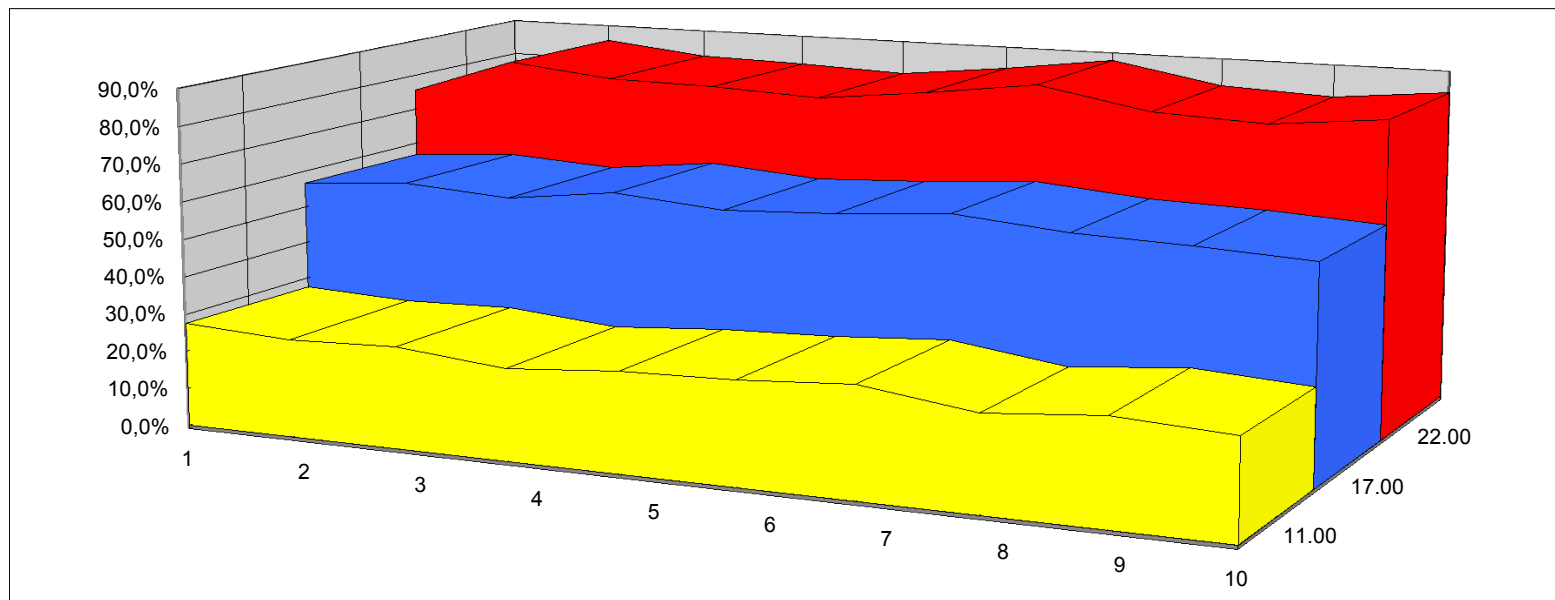
SEKTION SEZIONE	Männer Uomini	Frauen Donne	GESAMT SOMMA	Männer Uomini	Frauen Donne
1	480	521	1.001	48,0%	52,0%
2	587	637	1.224	48,0%	52,0%
3	590	591	1.181	50,0%	50,0%
4	521	550	1.071	48,6%	51,4%
5	482	481	963	50,1%	49,9%
6	460	498	958	48,0%	52,0%
7	569	575	1.144	49,7%	50,3%
8	506	535	1.041	48,6%	51,4%
9	463	504	967	47,9%	52,1%
10	564	556	1.120	50,4%	49,6%
<b>GESAMT SOMMA</b>	<b>5.222</b>	<b>5.448</b>	<b>10.670</b>	<b>48,9%</b>	<b>51,1%</b>



# LANDTAGSWAHLEN 2008/ELEZIONI PROVINCIALI 2008

## WAHLBETEILIGUNG/QUOTA DI PARTECIPAZIONE

SEKTION SEZIONE	Wahlberechtigte Elettori	11.00			17.00			22.00			
					Männer Uomini	Frauen Donne	GESAMT SOMMA				Männer Uomini
1	1.001	275	567	362	395	757	27,5%	56,6%	36,2%	39,5%	75,6%
2	1.224	318	719	499	548	1.047	26,0%	58,7%	40,8%	44,8%	85,5%
3	1.181	317	673	482	491	973	26,8%	57,0%	40,8%	41,6%	82,4%
4	1.071	259	647	432	446	878	24,2%	60,4%	40,3%	41,6%	82,0%
5	963	254	560	393	385	778	26,4%	58,2%	40,8%	40,0%	80,8%
6	958	260	570	391	413	804	27,1%	59,5%	40,8%	43,1%	83,9%
7	1.144	333	706	505	500	1.005	29,1%	61,7%	44,1%	43,7%	87,8%
8	1.041	260	617	419	439	858	25,0%	59,3%	40,2%	42,2%	82,4%
9	967	267	565	371	414	785	27,6%	58,4%	38,4%	42,8%	81,2%
10	1.120	290	637	476	468	944	25,9%	56,9%	42,5%	41,8%	84,3%
<b>GESAMT SOMMA</b>	<b>10.670</b>	<b>2.833</b>	<b>6.261</b>	<b>4.330</b>	<b>4.499</b>	<b>8.829</b>	<b>26,6%</b>	<b>58,7%</b>	<b>40,6%</b>	<b>42,2%</b>	<b>82,7%</b>

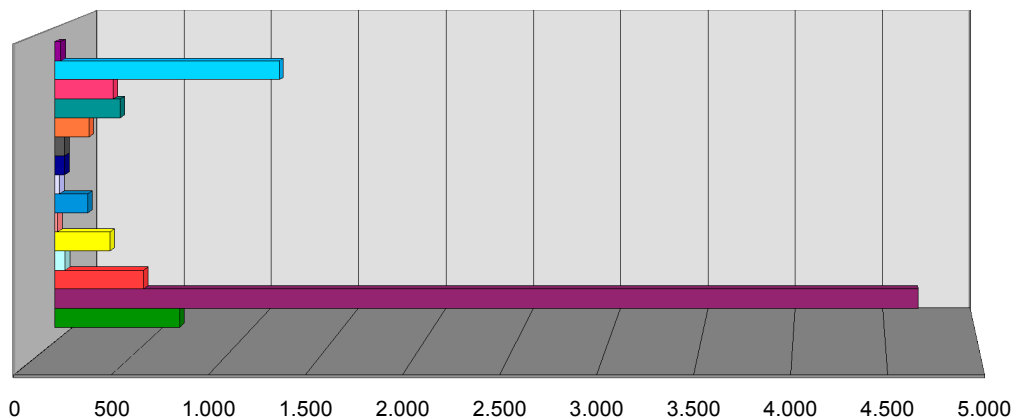


# LANDTAGSWAHLEN 2008/ELEZIONI PROVINCIALI 2008

## LISTENSTIMMEN/VOTI DI LISTA

SEKTION/SEZIONE	1	2	3	4	5	6	7	8	9	10	GESAMT SOMMA
<b>LISTE/LISTA</b>											
VERDI GRÜNE BÜRGER LISTE CIVICHE	69	79	90	62	63	53	69	68	41	84	<b>678</b>
SÜDTIROLER VOLKSPARTEI	413	477	468	414	357	482	616	464	479	507	<b>4.677</b>
SÜD-TIROLER FREIHEIT	42	49	48	39	50	48	64	57	31	53	<b>481</b>
CASINI UDC	2	10	12	5	10	2	2	4	3	5	<b>55</b>
BÜRGERBEWEGUNG	31	55	31	33	15	20	25	32	14	40	<b>296</b>
SÜDTIROLER KOMMUNISTEN	0	0	2	6	1	0	2	1	0	1	<b>13</b>
LEGA NORD SÜDTIROL	13	23	30	26	16	8	11	16	14	20	<b>177</b>
LADINS DOLOMITES	6	3	0	1	4	2	2	0	3	4	<b>25</b>
DIPIETRO ITALIA DEI VALORI	7	12	4	9	5	0	0	5	5	2	<b>49</b>
UNITALIA MOVIMENTO INIZIATIVA SOCIALE	7	5	6	11	7	1	0	4	1	7	<b>49</b>
UNION FÜR SÜDTIROL	11	17	29	17	20	17	23	22	9	19	<b>184</b>
IL POPOLO DELLA LIBERTÀ BERLUSCONI	26	76	51	41	41	10	19	32	35	21	<b>352</b>
DEMOKRATISCHE PARTEI PD	21	57	37	49	47	19	9	20	25	30	<b>314</b>
DIE FREIHEITLICHEN	82	150	135	141	108	116	139	106	113	128	<b>1.218</b>
LINKE FÜR SÜDTIROL	3	2	6	4	4	3	1	1	1	4	<b>29</b>
<b>gültig/validi</b>	<b>733</b>	<b>1.015</b>	<b>949</b>	<b>858</b>	<b>748</b>	<b>781</b>	<b>982</b>	<b>832</b>	<b>774</b>	<b>925</b>	<b>8.597</b>
<b>weiss/bianchi</b>	<b>2</b>	<b>12</b>	<b>8</b>	<b>6</b>	<b>7</b>	<b>6</b>	<b>8</b>	<b>15</b>	<b>3</b>	<b>7</b>	<b>74</b>
<b>ungültig/nulli</b>	<b>22</b>	<b>20</b>	<b>16</b>	<b>14</b>	<b>23</b>	<b>17</b>	<b>15</b>	<b>11</b>	<b>8</b>	<b>12</b>	<b>158</b>
<b>GESAMT/SOMMA</b>	<b>757</b>	<b>1.047</b>	<b>973</b>	<b>878</b>	<b>778</b>	<b>804</b>	<b>1.005</b>	<b>858</b>	<b>785</b>	<b>944</b>	<b>8.829</b>

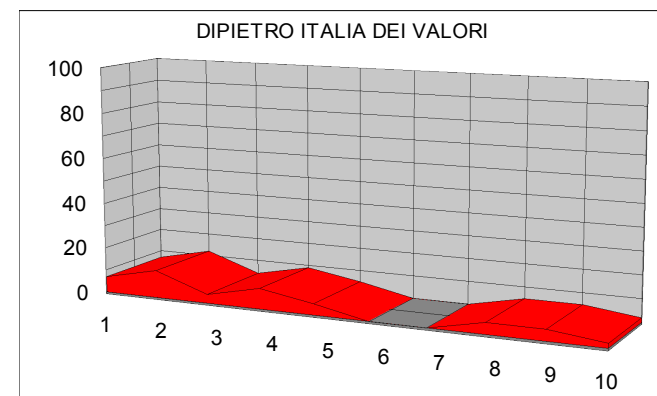
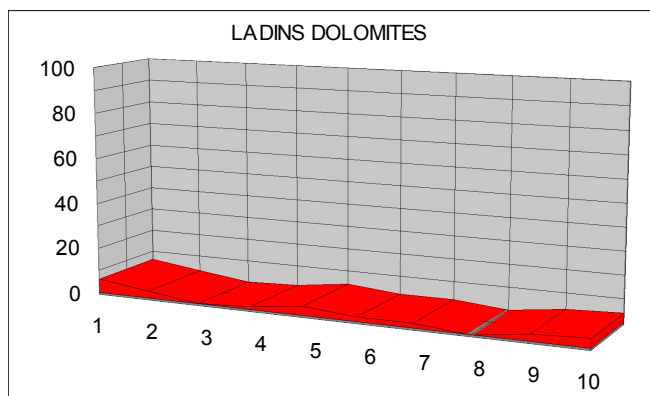
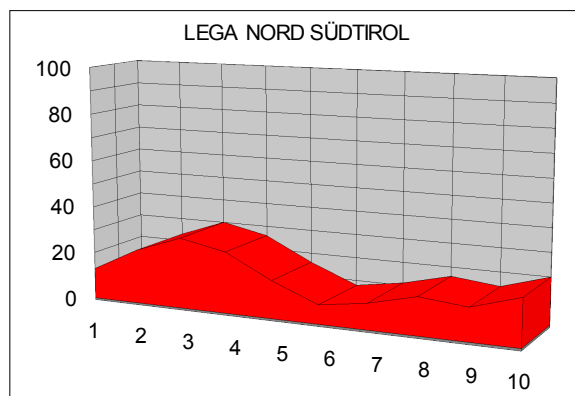
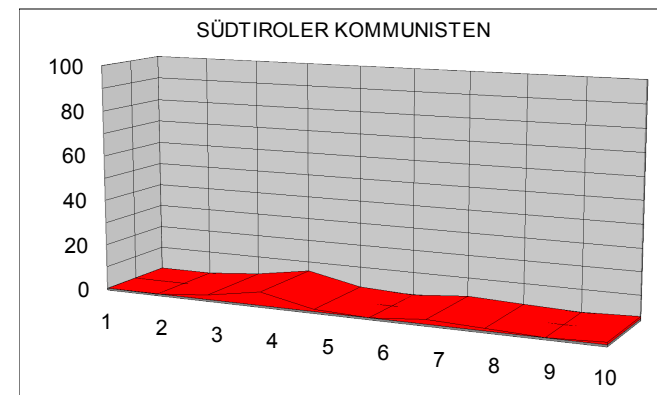
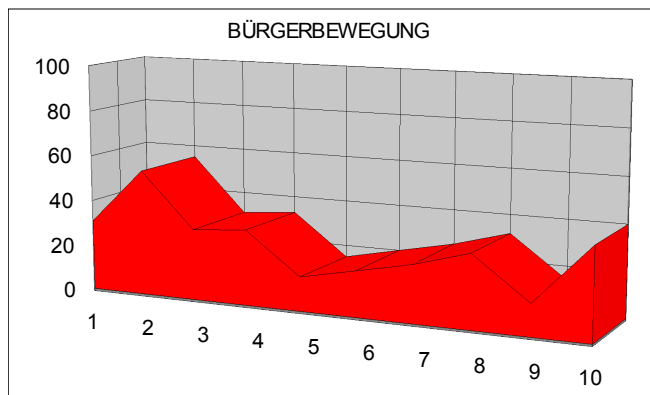
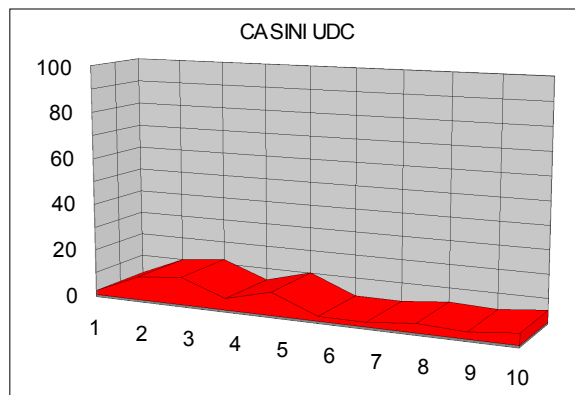
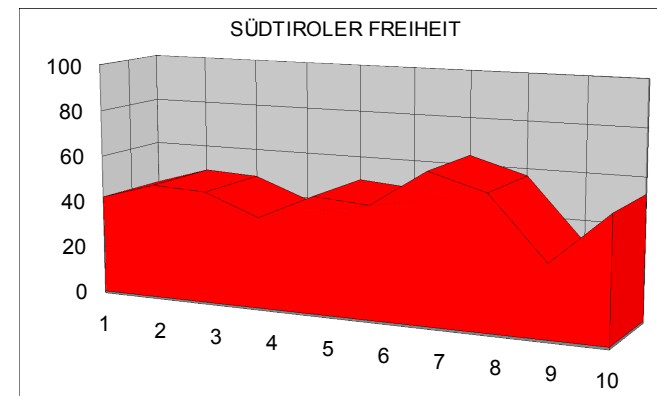
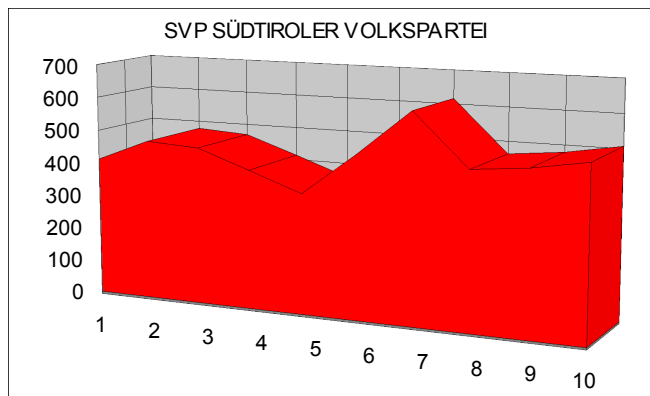
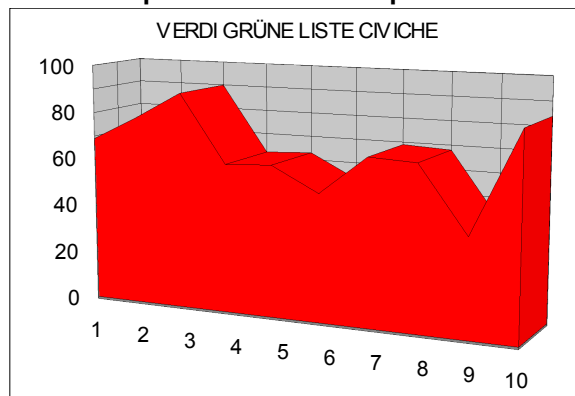
auf Gemeindeebene/Totale Comune



# LANDTAGSWAHLEN 2008/ELEZIONI PROVINCIALI 2008

## LISTENSTIMMEN/VOTI DI LISTA

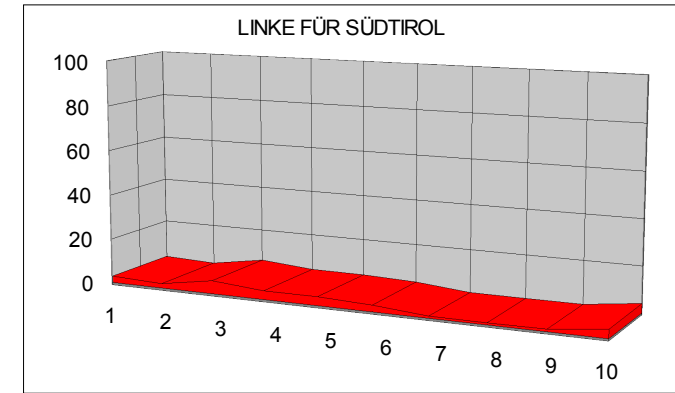
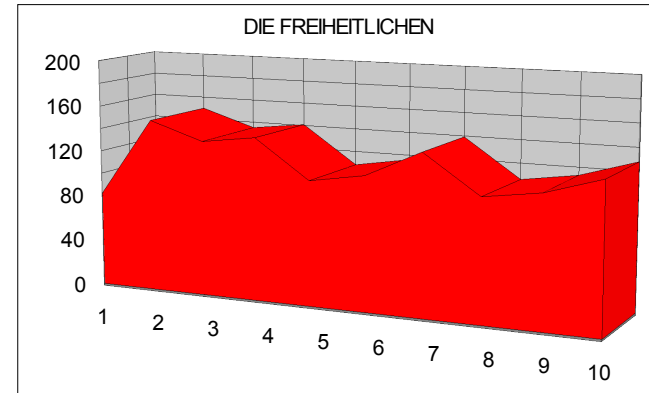
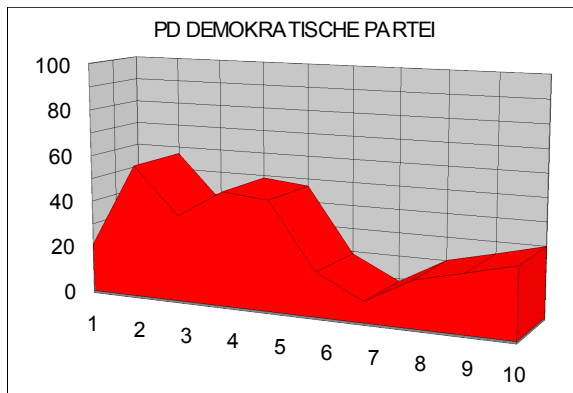
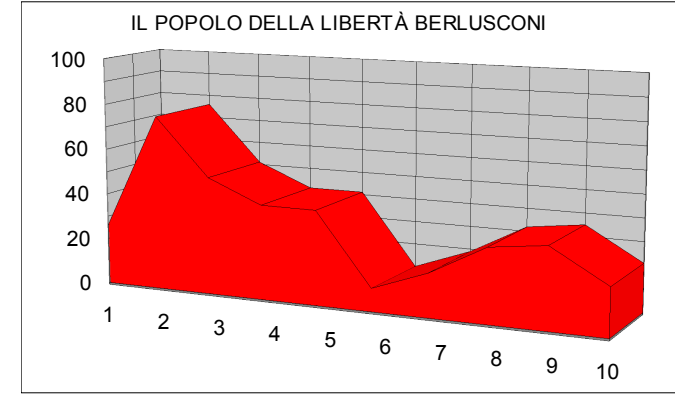
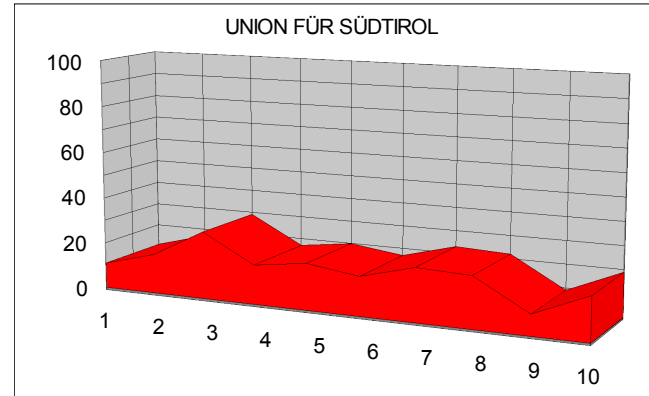
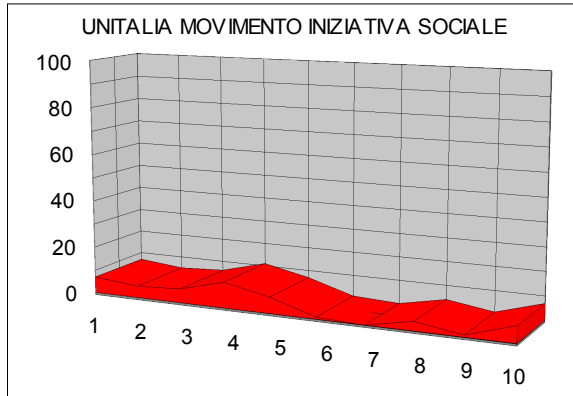
### STIMMEN pro SEKTION/VOTI per SEZIONE



# LANDTAGSWAHLEN 2008/ELEZIONI PROVINCIALI 2008

## LISTENSTIMMEN/VOTI DI LISTA

### STIMMEN pro SEKTION/VOTI per SEZIONE

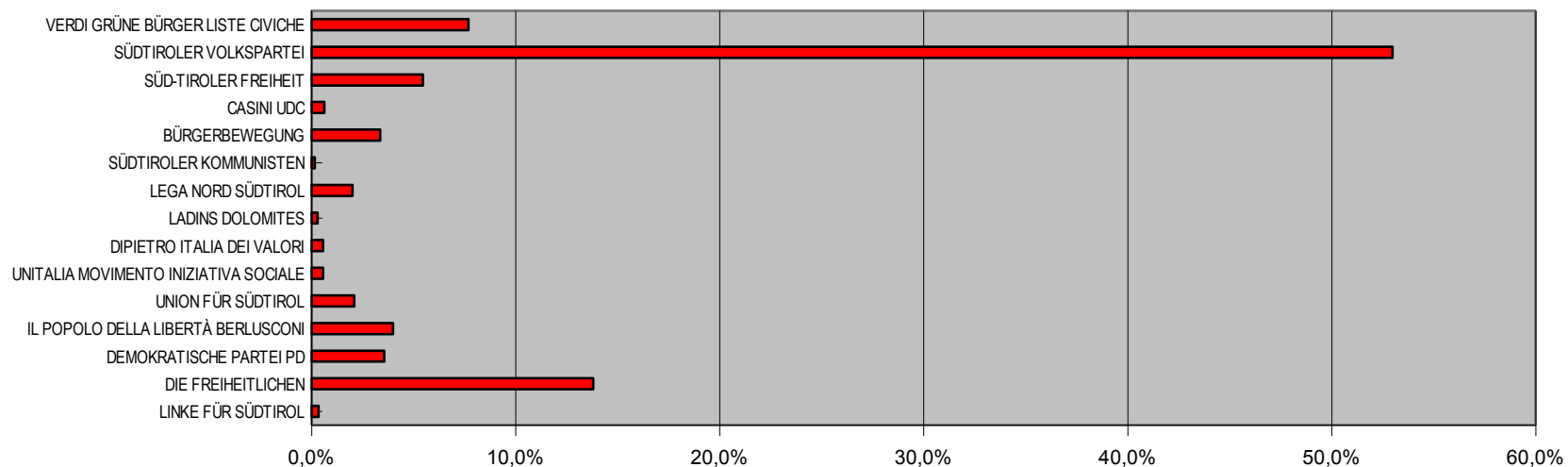


# LANDTAGSWAHLEN 2008/ELEZIONI PROVINCIALI 2008

## LISTENSTIMMEN %/VOTI DI LISTA %

SEKTION/SEZIONE	1	2	3	4	5	6	7	8	9	10	GESAMT SOMMA	Gesamt/somma gültig/validi
<b>LISTE/LISTA</b>												
VERDI GRÜNE BÜRGER LISTE CIVICHE	9,1%	7,5%	9,2%	7,1%	8,1%	6,6%	6,9%	7,9%	5,2%	8,9%	7,7%	7,9%
SÜDTIROLER VOLKSPARTEI	54,6%	45,6%	48,1%	47,2%	45,9%	60,0%	61,3%	54,1%	61,0%	53,7%	53,0%	54,4%
SÜD-TIROLER FREIHEIT	5,5%	4,7%	4,9%	4,4%	6,4%	6,0%	6,4%	6,6%	3,9%	5,6%	5,4%	5,6%
CASINI UDC	0,3%	1,0%	1,2%	0,6%	1,3%	0,2%	0,2%	0,5%	0,4%	0,5%	0,6%	0,6%
BÜRGERBEWEGUNG	4,1%	5,3%	3,2%	3,8%	1,9%	2,5%	2,5%	3,7%	1,8%	4,2%	3,4%	3,4%
SÜDTIROLER KOMMUNISTEN	0,0%	0,0%	0,2%	0,7%	0,1%	0,0%	0,2%	0,1%	0,0%	0,1%	0,1%	0,2%
LEGA NORD SÜDTIROL	1,7%	2,2%	3,1%	3,0%	2,1%	1,0%	1,1%	1,9%	1,8%	2,1%	2,0%	2,1%
LADINS DOLOMITES	0,8%	0,3%	0,0%	0,1%	0,5%	0,2%	0,2%	0,0%	0,4%	0,4%	0,3%	0,3%
DIPIETRO ITALIA DEI VALORI	0,9%	1,1%	0,4%	1,0%	0,6%	0,0%	0,0%	0,6%	0,6%	0,2%	0,6%	0,6%
UNITALIA MOVIMENTO INIZIATIVA SOCIALE	0,9%	0,5%	0,6%	1,3%	0,9%	0,1%	0,0%	0,5%	0,1%	0,7%	0,6%	0,6%
UNION FÜR SÜDTIROL	1,5%	1,6%	3,0%	1,9%	2,6%	2,1%	2,3%	2,6%	1,1%	2,0%	2,1%	2,1%
IL POPOLO DELLA LIBERTÀ BERLUSCONI	3,4%	7,3%	5,2%	4,7%	5,3%	1,2%	1,9%	3,7%	4,5%	2,2%	4,0%	4,1%
DEMOKRATISCHE PARTEI PD	2,8%	5,4%	3,8%	5,6%	6,0%	2,4%	0,9%	2,3%	3,2%	3,2%	3,6%	3,7%
DIE FREIHEITLICHEN	10,8%	14,3%	13,9%	16,1%	13,9%	14,4%	13,8%	12,4%	14,4%	13,6%	13,8%	14,2%
LINKE FÜR SÜDTIROL	0,4%	0,2%	0,6%	0,5%	0,5%	0,4%	0,1%	0,1%	0,1%	0,4%	0,3%	0,3%
<b>gültig/validi</b>	<b>96,8%</b>	<b>96,9%</b>	<b>97,5%</b>	<b>97,7%</b>	<b>96,1%</b>	<b>97,1%</b>	<b>97,7%</b>	<b>97,0%</b>	<b>98,6%</b>	<b>98,0%</b>	<b>97,4%</b>	<b>100,0%</b>
<b>weiss/bianchi</b>	<b>0,3%</b>	<b>1,1%</b>	<b>0,8%</b>	<b>0,7%</b>	<b>0,9%</b>	<b>0,7%</b>	<b>0,8%</b>	<b>1,7%</b>	<b>0,4%</b>	<b>0,7%</b>	<b>0,8%</b>	
<b>ungültig/nulli</b>	<b>2,9%</b>	<b>1,9%</b>	<b>1,6%</b>	<b>1,6%</b>	<b>3,0%</b>	<b>2,1%</b>	<b>1,5%</b>	<b>1,3%</b>	<b>1,0%</b>	<b>1,3%</b>	<b>1,8%</b>	

### auf Gemeindeebene/Totale Comune



**LANDTAGSWAHLEN 2008/ELEZIONI PROVINCIALI 2008**

**VORZUGSSTIMMEN/VOTI DI PREFERENZA**

**VERDI GRÜNE BÜRGER LISTE CIVICHE**

<b>KANDIDAT/CANDIDATO</b>	<b>1</b>	<b>2</b>	<b>3</b>	<b>4</b>	<b>5</b>	<b>6</b>	<b>7</b>	<b>8</b>	<b>9</b>	<b>10</b>	<b>GESAMT/SOMMA</b>
HEISS HANS	34	38	46	22	22	21	37	38	24	34	316
DELLO SBARBA RICCARDO	23	24	33	11	17	16	27	19	16	23	209
BENEDIKTER RUDOLF	17	21	14	13	14	12	19	23	11	24	168
LETRARI CIMADON ELDA	16	6	12	7	15	9	6	9	3	13	96
FOPPA BRIGITTE	10	13	12	3	5	12	7	7	3	10	82
COSTA MICHAEL GUSTAV	4	9	11	6	4	3	12	13	5	11	78
SENONER CHRISTOPH	10	7	11	4	14	6	8	8	4	6	78
DEBIASI VERENA	7	7	11	3	8	6	5	6	6	15	74
MITTERSTEINER EVA	9	4	11	2	8	6	5	5	5	9	64
LOBIS MARKUS	6	6	7	3	3	4	6	5	6	4	50
BERNARD FRANCO	9	5	4	4	2	3	3	2	2	6	40
HOCHGRUBER ROBERT	3	2	1	1	2	4	5	1	3	1	23
ABATO MICHAELA	7	5	1	1	1	1	4	0	1	1	22
TRINCANATO PATRIZIA	0	4	3	3	1	0	4	2	0	4	21
KRIPP SIEGMUND	2	3	0	1	4	2	1	2	0	4	19
SENFETER IRENE	1	1	6	1	2	2	2	0	0	2	17
MUMELTER PILLER VERENA	2	1	0	0	6	0	1	3	0	3	16
LADSTÄTTER PAULA MARIA	2	1	3	0	0	1	4	1	2	1	15
NONES FRANCO	1	1	4	0	2	3	1	0	0	2	14
CORRADI ANNA MARIA	1	1	0	1	2	1	1	1	4	2	14
PLAGG ZODERER WALTRAUD MARIA	0	2	1	1	0	4	2	1	0	3	14
FINK ANDREAS	2	1	1	0	1	0	2	3	1	2	13
PRINOTH HERBERT FRANZ	2	2	0	0	2	1	1	0	0	4	12
COLETTA LORENZ	2	0	0	1	4	2	0	0	2	0	11
STEFANELLI CECILIA	0	0	0	0	2	2	3	0	1	1	9
NIEDERKOFER HANSPETER	0	1	3	1	0	1	1	1	0	1	9
DEGASPERI NADIA	0	2	1	0	1	0	2	1	0	1	8
MUTINELLI CLAUDIO	1	0	1	0	1	0	1	1	0	1	6
AGOLLI ANA	0	0	2	0	0	0	0	1	0	2	5
STAMPFL MARTIN	1	0	1	0	0	2	0	0	0	0	4
STEINER CARMEN	1	1	1	0	0	0	1	0	0	0	4
LIBERTO VALENTINO	0	0	2	0	0	0	0	0	0	0	2
PECHLANER THEODORA	0	1	0	0	0	1	0	0	0	0	2
MAURER RUDOLF MARIA	0	0	0	0	1	0	0	0	0	1	2
<b>GESAMT/SOMMA</b>	<b>173</b>	<b>169</b>	<b>203</b>	<b>89</b>	<b>144</b>	<b>125</b>	<b>171</b>	<b>153</b>	<b>99</b>	<b>191</b>	<b>1517</b>

**LANDTAGSWAHLEN 2008/ELEZIONI PROVINCIALI 2008**

**VORZUGSSTIMMEN/VOTI DI PREFERENZA**

**SÜDTIROLER VOLKSPARTEI**

<b>KANDIDAT/CANDIDATO</b>	<b>1</b>	<b>2</b>	<b>3</b>	<b>4</b>	<b>5</b>	<b>6</b>	<b>7</b>	<b>8</b>	<b>9</b>	<b>10</b>	<b>GESAMT/SOMMA</b>
DURNWALDER ALOIS	308	339	350	291	252	332	463	325	305	444	<b>3.409</b>
PICHLER ROLLE ELMAR	91	113	95	71	84	111	147	115	102	98	<b>1.027</b>
BERGER JOHANN KARL	94	59	74	62	48	93	125	81	110	101	<b>847</b>
WIDMANN THOMAS	68	80	94	69	71	77	118	82	75	83	<b>817</b>
STOCKER MARTHA	68	69	54	38	42	65	78	51	78	62	<b>605</b>
THEINER RICHARD	64	52	62	36	39	65	84	60	75	66	<b>603</b>
SCHWEIGKOFLER DORIS	52	45	42	52	24	137	106	74	11	39	<b>582</b>
MUSSNER FLORIAN	50	61	49	41	58	51	67	53	43	50	<b>523</b>
ZELGER THALER ROSA MARIA	46	35	36	38	22	52	68	38	55	44	<b>434</b>
KASSLATTER MUR SABINA	32	50	40	28	31	38	49	37	34	54	<b>393</b>
LAMPRECHT SEPPL	40	19	41	20	14	44	83	27	41	35	<b>364</b>
VON DELLEMANN OTTO	30	39	25	30	30	38	36	29	39	46	<b>342</b>
SCHULER ARNOLD	20	42	42	26	27	27	41	36	25	35	<b>321</b>
STIRNER BRANTSCH VERONIKA	34	58	23	15	24	30	46	22	20	31	<b>303</b>
STEGER DIETER	27	30	25	14	23	28	68	29	29	17	<b>290</b>
LAIMER MICHAEL JOSEF	22	21	25	22	28	19	25	22	34	27	<b>245</b>
UNTERBERGER JULIANE	17	26	21	20	20	32	26	13	16	30	<b>221</b>
PARDELLER GEORG	14	18	23	22	10	21	39	30	17	22	<b>216</b>
PRANTL DIETMAR	19	21	16	21	17	21	32	20	16	29	<b>212</b>
RENZLER HELMUTH	15	29	12	9	20	22	27	16	24	22	<b>196</b>
MUNTER HANSPETER	14	15	26	14	18	18	28	22	10	17	<b>182</b>
HOCHGRUBER MARIA MAGDALENA	15	12	16	10	5	11	25	17	19	23	<b>153</b>
RAINER TANJA	10	17	15	7	12	9	25	13	10	7	<b>125</b>
BAUMGARTNER WALTER	13	14	14	7	9	12	5	8	23	12	<b>117</b>
STAUDER HARALD	10	15	19	10	2	11	19	9	8	8	<b>111</b>
EGARTNER CHRISTIAN	7	26	11	10	9	6	8	12	3	17	<b>109</b>
LADURNER MARTINA	7	6	6	8	16	9	6	15	4	9	<b>86</b>
SCHWEIGKOFLER MANFRED	9	12	1	7	5	11	14	10	2	3	<b>74</b>
MERNAER ERICH	8	13	7	2	3	4	10	11	2	3	<b>63</b>
EGGER OSWALD	5	4	5	3	9	4	10	2	6	5	<b>53</b>
MITTERMAIR FRIEDRICH	4	1	6	1	3	2	1	0	7	1	<b>26</b>
SCHNARF NIEDRIST MARGITH MARIA	2	2	0	1	1	3	4	5	3	3	<b>24</b>
NOGGLER JOSEF	1	6	1	0	3	1	1	0	5	2	<b>20</b>
JUD MANFRED	1	2	1	1	1	1	2	2	0	4	<b>15</b>
ENNEMOSER FRANZ	1	1	0	0	1	0	0	0	2	2	<b>7</b>
<b>GESAMT/SOMMA</b>	<b>1.218</b>	<b>1.352</b>	<b>1.277</b>	<b>1.006</b>	<b>981</b>	<b>1.405</b>	<b>1.886</b>	<b>1.286</b>	<b>1.253</b>	<b>1.451</b>	<b>13.115</b>



**LANDTAGSWAHLEN 2008/ELEZIONI PROVINCIALI 2008**

**VORZUGSSTIMMEN/VOTI DI PREFERENZA**

**SÜD-TIROLER FREIHEIT**

<b>KANDIDAT/CANDIDATO</b>	<b>1</b>	<b>2</b>	<b>3</b>	<b>4</b>	<b>5</b>	<b>6</b>	<b>7</b>	<b>8</b>	<b>9</b>	<b>10</b>	<b>GESAMT/SOMMA</b>
KLOTZ EVA	37	37	38	18	40	33	53	41	16	44	357
KNOLL SVEN	23	21	21	15	30	23	27	16	9	19	204
KOLLMANN CHRISTIAN	9	6	6	6	15	7	10	4	2	4	69
HECHENSTEINER IVO	6	5	5	4	8	8	8	5	5	4	58
CAMPIDELL REINHILD	3	10	3	4	5	3	8	4	3	8	51
LANG ROLAND	2	1	5	0	1	1	1	2	2	2	17
STAFFLER HARTMUTH	4	0	1	2	7	2	1	0	0	0	17
KOFLER GUDRUN	3	0	3	2	1	3	1	0	1	0	14
PUFF LORENZ	0	1	1	2	0	0	4	2	0	2	12
ZELGER STEFAN	3	1	1	0	3	0	2	1	1	0	12
UNTERKALMSTEINER ERIKA	0	1	0	2	1	0	0	1	0	0	5
LADURNER REINHOLD	1	1	0	0	1	1	0	0	0	1	5
BERGMEISTER MIRJANA	1	0	2	1	0	0	0	0	0	0	4
BERGMEISTER MARKUS	1	0	0	0	1	1	1	0	0	0	4
RENNER VERONIKA	0	0	0	1	1	0	0	1	0	0	3
CAMPIDELL HERBERT	0	1	0	0	0	0	1	1	0	0	3
OBERLECHNER THOMAS	0	1	0	0	0	0	0	1	0	1	3
KASER FABIAN	1	1	1	0	0	0	0	0	0	0	3
WEGER BARBARA	0	1	1	0	0	0	0	0	0	1	3
LOCHER MARTIN	2	0	1	0	0	0	0	0	0	0	3
MORODER MARIA WILMA	0	1	0	0	1	0	0	0	0	0	2
HOFER GEORG KARL	0	0	0	2	0	0	0	0	0	0	2
CREPAZ MARTIN	0	1	0	1	0	0	0	0	0	0	2
KÖCH ANDREAS	1	1	0	0	0	0	0	0	0	0	2
AUER KONRAD	0	1	0	0	0	0	0	0	1	0	2
KAISER ERICH	0	1	0	0	0	0	0	0	0	0	1
HARRASSER MARKUS	0	0	0	1	0	0	0	0	0	0	1
THANEI ANDREAS	0	0	0	0	0	0	0	0	0	1	1
KERSCHBAUMER CHRISTA	0	0	0	0	0	1	0	0	0	0	1
REICHEGGER THOMAS	0	0	0	0	0	0	0	0	0	0	0
<b>GESAMT/SOMMA</b>	<b>97</b>	<b>93</b>	<b>89</b>	<b>61</b>	<b>115</b>	<b>83</b>	<b>117</b>	<b>79</b>	<b>40</b>	<b>87</b>	<b>861</b>

**LANDTAGSWAHLEN 2008/ELEZIONI PROVINCIALI 2008**

**VORZUGSSTIMMEN/VOTI DI PREFERENZA**

**CASINI UDC**

<b>KANDIDAT/CANDIDATO</b>	<b>1</b>	<b>2</b>	<b>3</b>	<b>4</b>	<b>5</b>	<b>6</b>	<b>7</b>	<b>8</b>	<b>9</b>	<b>10</b>	<b>GESAMT/SOMMA</b>
REPETTO SANDRO	1	7	5	1	1	0	1	1	2	2	21
GENNACCARO FRANCESCO	0	3	1	1	1	0	1	4	2	0	13
FLAIM THOMAS	1	1	2	2	2	1	0	1	1	0	11
FRANCESCHINI NESI CARLA	0	1	0	0	4	0	0	0	0	0	5
GOZZI SARA	1	0	2	0	0	0	0	0	0	0	3
GRISENTI STEFANIA	1	0	2	0	0	0	0	0	0	0	3
ZORZI MARIO	0	0	1	1	0	0	1	0	0	0	3
FESTINI BATTIFERRO BRUNO	0	1	0	0	0	0	0	0	1	0	2
GALLIPPI SANDRA	0	0	0	0	0	0	0	0	2	0	2
GIGLIOTTI FRANCESCA	0	0	0	0	0	0	1	0	0	0	1
DALLA VILLA MASSIMO	0	1	0	0	0	0	0	0	0	0	1
MAZZI LUIGI	0	0	0	0	0	0	0	0	1	0	1
MARESO GISELLA	0	0	1	0	0	0	0	0	0	0	1
DE SIMINE CECONI ANGELA	0	0	0	0	0	0	0	0	1	0	1
GASPERINI FULVIO	0	0	0	0	1	0	0	0	0	0	1
SACCO GIACINTO	0	0	0	0	0	0	1	0	0	0	1
ABRAM MARIO	0	0	0	0	0	0	0	0	0	0	0
COSTANZO ANGELO	0	0	0	0	0	0	0	0	0	0	0
ZACCOMER ANTONIO	0	0	0	0	0	0	0	0	0	0	0
ROMANO VALERIA	0	0	0	0	0	0	0	0	0	0	0
PAVESI ANGELO	0	0	0	0	0	0	0	0	0	0	0
SCALAVINO GIOVANNI	0	0	0	0	0	0	0	0	0	0	0
STEFANATI SERGIO	0	0	0	0	0	0	0	0	0	0	0
ENDRIZZI PAOLO	0	0	0	0	0	0	0	0	0	0	0
CARRADI ROMEN GIORGIA	0	0	0	0	0	0	0	0	0	0	0
PLANOTSCHER HAYMO	0	0	0	0	0	0	0	0	0	0	0
BERTINOTTI IVAN		0	0	0	0	0	0	0	0	0	0
ANTONIOL MAGNINI MARIA GRAZIA	0	0	0	0	0	0	0	0	0	0	0
ADAMI FRANCESCA	0	0	0	0	0	0	0	0	0	0	0
FOLCHINI ALESSANDRO	0	0	0	0	0	0	0	0	0	0	0
DARIZ DOLORES	0	0	0	0	0	0	0	0	0	0	0
FORMICHELLA MIRKO	0	0	0	0	0	0	0	0	0	0	0
MANCUSO GIUSEPPE	0	0	0	0	0	0	0	0	0	0	0
VISCOMI ANTONIO	0	0	0	0	0	0	0	0	0	0	0
DA SOIS ROBERTO	0	0	0	0	0	0	0	0	0	0	0
<b>GESAMT/SOMMA</b>	<b>4</b>	<b>14</b>	<b>14</b>	<b>5</b>	<b>9</b>	<b>1</b>	<b>5</b>	<b>6</b>	<b>10</b>	<b>2</b>	<b>70</b>

**LANDTAGSWAHLEN 2008/ELEZIONI PROVINCIALI 2008**

**VORZUGSSTIMMEN/VOTI DI PREFERENZA**

**BÜRGERBEWEGUNG**

KANDIDAT/CANDIDATO	1	2	3	4	5	6	7	8	9	10	GESAMT/SOMMA
HOFER LARCHER MONIKA	23	47	24	19	9	13	20	27	10	26	218
RIEDER JOHANN	14	29	10	11	5	8	13	13	5	15	123
VOLGGER MARTIN	7	14	8	3	1	6	7	7	2	7	62
LÖSCH HANS	5	7	7	1	0	0	4	4	2	3	33
ELZENBAUMER GERHARD	3	9	1	4	1	3	4	3	1	2	31
WASSERER MAGNUS	0	2	0	0	1	0	1	2	0	1	7
<b>GESAMT/SOMMA</b>	<b>52</b>	<b>108</b>	<b>50</b>	<b>38</b>	<b>17</b>	<b>30</b>	<b>49</b>	<b>56</b>	<b>20</b>	<b>54</b>	<b>474</b>

**SÜDTIROLER KOMMUNISTEN**

KANDIDAT/CANDIDATO	1	2	3	4	5	6	7	8	9	10	GESAMT/SOMMA
CARLINI CARLO	0	0	0	4	1	0	0	0	0	0	5
GUGGENBICHLER BECK FRANZISKA	0	0	0	3	0	0	0	0	0	0	3
PIAZZON ANTONELLA	0	0	0	2	0	0	1	0	0	0	3
ALBER GIOVANNA	0	0	0	1	0	0	0	0	0	0	1
SCOLA BRUNO	0	0	0	1	0	0	0	0	0	0	1
FURCHÍ RENATO	0	0	0	1	0	0	0	0	0	0	1
MARCOTTO MAURO	0	0	0	0	0	0	0	0	0	0	0
MARZOLA ANNA	0	0	0	0	0	0	0	0	0	0	0
LUCARELLI MASSIMO	0	0	0	0	0	0	0	0	0	0	0
ZANNI DORFMANN GIUSEPPINA	0	0	0	0	0	0	0	0	0	0	0
PASCIUTO PAOLO	0	0	0	0	0	0	0	0	0	0	0
SPADARI LILIANA	0	0	0	0	0	0	0	0	0	0	0
WEISSENEGGER LORA	0	0	0	0	0	0	0	0	0	0	0
RINALDI ALESSANDRO	0	0	0	0	0	0	0	0	0	0	0
SABBADIN PATRIZIA	0	0	0	0	0	0	0	0	0	0	0
LAZZARINI MILENA	0	0	0	0	0	0	0	0	0	0	0
ALTOBELLI GIULIO	0	0	0	0	0	0	0	0	0	0	0
ABELLI GRAZIANO	0	0	0	0	0	0	0	0	0	0	0
ARCIERI CALOGERO	0	0	0	0	0	0	0	0	0	0	0
MUNERATO LUCIANO	0	0	0	0	0	0	0	0	0	0	0
AGOSTINI ROSA	0	0	0	0	0	0	0	0	0	0	0
AZZOLIN NICOLETTA	0	0	0	0	0	0	0	0	0	0	0
CALLEGARI MAURIZIO	0	0	0	0	0	0	0	0	0	0	0
DEMI EMILIA	0	0	0	0	0	0	0	0	0	0	0
BENETTI MATTIA	0	0	0	0	0	0	0	0	0	0	0
BOTTAMEDI MORENO	0	0	0	0	0	0	0	0	0	0	0
<b>GESAMT/SOMMA</b>	<b>0</b>	<b>0</b>	<b>0</b>	<b>12</b>	<b>1</b>	<b>0</b>	<b>1</b>	<b>0</b>	<b>0</b>	<b>0</b>	<b>14</b>

**LANDTAGSWAHLEN 2008/ELEZIONI PROVINCIALI 2008**

**VORZUGSSTIMMEN/VOTI DI PREFERENZA**

**LEGA NORD SÜDTIROL**

<b>KANDIDAT/CANDIDATO</b>	<b>1</b>	<b>2</b>	<b>3</b>	<b>4</b>	<b>5</b>	<b>6</b>	<b>7</b>	<b>8</b>	<b>9</b>	<b>10</b>	<b>GESAMT/SOMMA</b>
ARTIOLI ELENA	8	10	10	9	6	4	6	10	6	6	75
ATZ ROLAND	4	8	10	7	8	4	5	7	4	6	63
BASSANI PAOLO	3	1	3	3	3	0	0	2	2	1	18
KOFLER HANSJÖRG	2	1	1	0	0	0	1	0	1	1	7
FREI WALTER	0	0	1	0	0	0	0	0	0	1	2
HEUSCH GILBERTO	2	0	0	0	0	0	0	0	0	0	2
HEIS S KARMEN	0	0	0	1	0	0	0	0	1	0	2
PANCHERI ALBERTO	0	0	0	0	0	0	1	0	0	0	1
PIRONE ALOIS	1	0	0	0	0	0	2	0	0	0	3
GALLO SARA	1	0	0	1	0	0	0	0	0	0	2
POZZI MATTEO	0	0	0	0	0	0	0	0	2	0	2
MAESTRI ALESSANDRO	0	0	0	1	0	0	0	0	0	1	2
CLARI OLIVO	0	1	1	0	0	0	0	0	0	0	2
BENVENUTTI FELIPE	0	0	0	1	0	0	0	1	0	0	2
FAUSTINI LUIGI	0	0	0	0	1	0	0	0	1	0	2
BUSSOLA JOSEF	0	1	0	0	0	0	0	0	0	0	1
DEFANT NERI	1	0	0	0	0	0	0	0	0	0	1
MERANER JOHANN	0	0	1	0	0	0	0	0	0	0	1
GIORDANO LAURA	1	0	0	0	0	0	0	0	0	0	1
BUCCHERI GIUSEPPE	0	0	0	0	0	0	0	0	0	0	0
BRASOLIN PAOLO	0	0	0	0	0	0	0	0	0	0	0
ZANDONELLA RENATO	0	0	0	0	0	0	0	0	0	0	0
ZANCHETTA PAOLO	0	0	0	0	0	0	0	0	0	0	0
TUTI DANIELE	0	0	0	0	0	0	0	0	0	0	0
PRETOLANI CHIARA	0	0	0	0	0	0	0	0	0	0	0
GIORDANI ROBERTO	0	0	0	0	0	0	0	0	0	0	0
FASSA STEFANO	0	0	0	0	0	0	0	0	0	0	0
FLUTERIO PASQUALE	0	0	0	0	0	0	0	0	0	0	0
NIEDERKOFLER GOTTFRIED	0	0	0	0	0	0	0	0	0	0	0
DEMATTÉ UMBERTO	0	0	0	0	0	0	0	0	0	0	0
GUADAGNINI ALDO	0	0	0	0	0	0	0	0	0	0	0
<b>GESAMT/SOMMA</b>	<b>23</b>	<b>22</b>	<b>27</b>	<b>23</b>	<b>18</b>	<b>8</b>	<b>15</b>	<b>20</b>	<b>17</b>	<b>16</b>	<b>189</b>

**LANDTAGSWAHLEN 2008/ELEZIONI PROVINCIALI 2008**

**VORZUGSSTIMMEN/VOTI DI PREFERENZA**

**LADINS DOLOMITES**

<b>KANDIDAT/CANDIDATO</b>	<b>1</b>	<b>2</b>	<b>3</b>	<b>4</b>	<b>5</b>	<b>6</b>	<b>7</b>	<b>8</b>	<b>9</b>	<b>10</b>	<b>GESAMT/SOMMA</b>
DEJACO FRANCESCO	0	0	0	0	2	0	0	0	3	2	7
GOLLER ULRICA	2	1	0	0	1	0	1	0	0	1	6
FIUNG FRANCESCO	0	1	0	0	0	0	1	0	2	0	4
LEZUO IVAN	4	0	0	0	0	0	0	0	0	0	4
MUSSNER DARIA LUISA MILVA	0	0	0	0	0	0	0	0	2	0	2
VIDESOTT PAUL	0	1	0	0	0	0	0	0	1	0	2
KOSTNER RODOLFO ENGELBERT	0	0	0	0	1	0	0	0	0	0	1
PESCOLLDERUNG EGON	1	0	0	0	0	0	0	0	0	0	1
PIZZININI MARCO	0	1	0	0	0	0	0	0	0	0	1
AVESANI RAINER ALEXANDER	1	0	0	0	0	0	0	0	0	0	1
PARDELLER CHRISTA	0	0	0	0	0	0	0	0	1	0	1
TAVELLA PHILIPP	1	0	0	0	0	0	0	0	0	0	1
AGREITER HUBERT	0	0	0	0	1	0	0	0	0	0	1
PLANCKER LUKAS	0	0	0	0	0	0	0	0	1	0	1
SENONER LIVIO	1	0	0	0	0	0	0	0	0	0	1
DONÉ FRANCO	0	0	0	0	1	0	0	0	0	0	1
GROSSRUBATSCHER RAIMONDO	0	0	0	0	0	0	0	0	1	0	1
DAPOZ EDIT	0	0	0	0	0	0	0	0	1	0	1
DEBERTOL RICCARDO	1	0	0	0	0	0	0	0	0	0	1
BROLL MAURIZIO	1	0	0	0	0	0	0	0	0	0	1
CASTLUNGER CRISTINA	1	0	0	0	0	0	0	0	0	0	1
DEMEZ ENRICO GIOVANNI	1	0	0	0	0	0	0	0	0	0	1
COSTAMOLING GUGLIELMO	0	1	0	0	0	0	0	0	0	0	1
BRANDLECHNER DAVID	0	0	0	0	0	0	0	0	0	0	0
SORATROI FLAVIO	0	0	0	0	0	0	0	0	0	0	0
COMPLOI HUBERT	0	0	0	0	0	0	0	0	0	0	0
TREBO HANS	0	0	0	0	0	0	0	0	0	0	0
FLÖSS HELGA	0	0	0	0	0	0	0	0	0	0	0
KASSLATTER WALTHER	0	0	0	0	0	0	0	0	0	0	0
PICCOLRUAZ PAOLO	0	0	0	0	0	0	0	0	0	0	0
BERTUOLO PRINOTH CLAUDIA	0	0	0	0	0	0	0	0	0	0	0
CRAZZOLARA GERTRUD	0	0	0	0	0	0	0	0	0	0	0
PIZZININI ALBERT	0	0	0	0	0	0	0	0	0	0	0
<b>GESAMT/SOMMA</b>	<b>14</b>	<b>5</b>	<b>0</b>	<b>0</b>	<b>6</b>	<b>0</b>	<b>2</b>	<b>0</b>	<b>12</b>	<b>3</b>	<b>42</b>

**LANDTAGSWAHLEN 2008/ELEZIONI PROVINCIALI 2008**

**VORZUGSSTIMMEN/VOTI DI PREFERENZA**

**DIPIETRO ITALIA DEI VALORI**

<b>KANDIDAT/CANDIDATO</b>	<b>1</b>	<b>2</b>	<b>3</b>	<b>4</b>	<b>5</b>	<b>6</b>	<b>7</b>	<b>8</b>	<b>9</b>	<b>10</b>	<b>GESAMT/SOMMA</b>
CIGOLLA LUIGI	4	7	2	1	2	0	0	3	3	2	24
RUSSO FRANCINE	0	1	0	0	0	0	0	0	2	0	3
CROCE FERNANDA	0	0	0	1	0	0	0	0	2	0	3
TOMASSIN STEFANIA	1	0	0	0	1	0	0	0	0	0	2
MARCASSOLI GIUSEPPE	0	0	0	2	0	0	0	0	0	0	2
ZOCCHI ROMANA	1	1	0	0	0	0	0	0	0	0	2
DI CESARIA GIOVANNI	1	0	0	0	0	0	0	0	1	0	2
TOLLIS CARMINE	0	2	0	0	0	0	0	0	0	0	2
LORO SIMONE	0	0	0	0	0	0	0	1	1	0	2
MOSTURA DANIELA	0	1	0	0	0	0	0	0	0	0	1
HUEZ PAUL	1	0	0	0	0	0	0	0	0	0	1
PUGLIESE ANTONIO	0	1	0	0	0	0	0	0	0	0	1
ROLFINI CARLO	1	0	0	0	0	0	0	0	0	0	1
FERLITA VINCENZO	0	1	0	0	0	0	0	0	0	0	1
AMATO ITALO	0	1	0	0	0	0	0	0	0	0	1
DALLACOSTA ALICE	0	1	0	0	0	0	0	0	0	0	1
DORIGATTI CHRISTIAN	1	0	0	0	0	0	0	0	0	0	1
GRUBER JOHANN	1	0	0	0	0	0	0	0	0	0	1
PISCITELLI PASQUALINA	0	0	0	0	0	0	0	0	0	0	0
D'EREDITA' CESARE	0	0	0	0	0	0	0	0	0	0	0
GAIO MARISA	0	0	0	0	0	0	0	0	0	0	0
FAIT DANIELA	0	0	0	0	0	0	0	0	0	0	0
DI DOMENICO PASQUALE	0	0	0	0	0	0	0	0	0	0	0
GRETTER ENRICO	0	0	0	0	0	0	0	0	0	0	0
STORTI ROMOLO	0	0	0	0	0	0	0	0	0	0	0
GRILLO MATTEO	0	0	0	0	0	0	0	0	0	0	0
ARMONDINI ROMANO	0	0	0	0	0	0	0	0	0	0	0
RAMPAZZO GIUSEPPINO	0	0	0	0	0	0	0	0	0	0	0
OGGERO BARBARA	0	0	0	0	0	0	0	0	0	0	0
TONAZZOLI GIUSEPPINA	0	0	0	0	0	0	0	0	0	0	0
BONADIO MARIA	0	0	0	0	0	0	0	0	0	0	0
MARINA GIUSEPPE	0	0	0	0	0	0	0	0	0	0	0
<b>GESAMT/SOMMA</b>	<b>11</b>	<b>16</b>	<b>2</b>	<b>4</b>	<b>3</b>	<b>0</b>	<b>0</b>	<b>4</b>	<b>9</b>	<b>2</b>	<b>51</b>

**LANDTAGSWAHLEN 2008/ELEZIONI PROVINCIALI 2008**

**VORZUGSSTIMMEN/VOTI DI PREFERENZA**

**UNITALIA MOVIMENTO INIZIATIVA SOCIALE**

<b>KANDIDAT/CANDIDATO</b>	<b>1</b>	<b>2</b>	<b>3</b>	<b>4</b>	<b>5</b>	<b>6</b>	<b>7</b>	<b>8</b>	<b>9</b>	<b>10</b>	<b>GESAMT/SOMMA</b>
SEPPI DONATO	4	1	2	2	4	0	0	3	1	4	21
CASAGRANDE GIANCARLO	0	0	2	1	0	0	0	0	0	0	3
CRESSOTTI PAOLO	0	0	2	1	0	0	0	0	0	0	3
FATTOR ALESSANDRO	0	0	0	1	1	0	0	1	0	0	3
LARCHER FLAVIO	0	0	0	0	1	0	0	0	0	1	2
SCHIATTI LUIGI	0	0	0	0	0	0	0	1	1	0	2
FACCHIN ALESSANDRO	0	0	0	1	0	0	0	0	0	0	1
DE METRI MATTEO	0	0	0	1	0	0	0	0	0	0	1
PICCOLIN GIANFRANCO	0	0	0	0	0	0	0	0	1	0	1
PIRAS GINO	0	0	0	0	1	0	0	0	0	0	1
VINCENZI LOREDANA	0	0	0	0	0	0	0	0	1	0	1
MARCATO STEFANO	1	0	0	0	0	0	0	0	0	0	1
BERTO ALESSANDRO	1	0	0	0	0	0	0	0	0	0	1
BARISON AUGUSTO	0	0	0	0	1	0	0	0	0	0	1
COLPI LUIGI	0	0	0	0	1	0	0	0	0	0	1
TUBARO PIETRO	0	0	0	0	0	0	0	0	0	0	0
PICCOLI GIANPAOLO	0	0	0	0	0	0	0	0	0	0	0
PERATHONER LEONHARD	0	0	0	0	0	0	0	0	0	0	0
OSELE RICCARDO	0	0	0	0	0	0	0	0	0	0	0
PIERETTO FAUSTO	0	0	0	0	0	0	0	0	0	0	0
TONOLLI EGIDIO	0	0	0	0	0	0	0	0	0	0	0
TOMASI WERNER	0	0	0	0	0	0	0	0	0	0	0
SURIANI GIUSEPPE	0	0	0	0	0	0	0	0	0	0	0
SCARSETTI SILVANO	0	0	0	0	0	0	0	0	0	0	0
MORETTI MARCO	0	0	0	0	0	0	0	0	0	0	0
COZZI FRANCESCO	0	0	0	0	0	0	0	0	0	0	0
CHIANESE GIUSEPPE	0	0	0	0	0	0	0	0	0	0	0
ALBERTIN BEATRICE	0	0	0	0	0	0	0	0	0	0	0
DANTE DANIELE	0	0	0	0	0	0	0	0	0	0	0
DE FRANCESCO IVAN	0	0	0	0	0	0	0	0	0	0	0
FASSON OMAR	0	0	0	0	0	0	0	0	0	0	0
LANZMASTER CAECILIA	0	0	0	0	0	0	0	0	0	0	0
BOITO RENATA	0	0	0	0	0	0	0	0	0	0	0
BOMPIERI ROBERTO	0	0	0	0	0	0	0	0	0	0	0
GHIRALDI LIVIANA	0	0	0	0	0	0	0	0	0	0	0
<b>GESAMT/SOMMA</b>	<b>6</b>	<b>1</b>	<b>6</b>	<b>7</b>	<b>9</b>	<b>0</b>	<b>0</b>	<b>5</b>	<b>4</b>	<b>5</b>	<b>43</b>

**LANDTAGSWAHLEN 2008/ELEZIONI PROVINCIALI 2008**

**VORZUGSSTIMMEN/VOTI DI PREFERENZA**

**UNION FÜR SÜDTIROL**

<b>KANDIDAT/CANDIDATO</b>	<b>1</b>	<b>2</b>	<b>3</b>	<b>4</b>	<b>5</b>	<b>6</b>	<b>7</b>	<b>8</b>	<b>9</b>	<b>10</b>	<b>GESAMT/SOMMA</b>
PÖDER ANDREAS	10	10	14	5	17	8	12	11	6	13	106
SPITALER ALBERT	2	3	3	2	5	0	1	4	3	1	24
STAUDER ROLAND	2	5	2	0	5	0	3	1	2	4	24
TARABOI BLAAS CHRISTINA AGNES	1	2	2	1	2	0	4	2	2	3	19
GRÜNBACHER HARALD	1	2	0	0	2	0	3	3	2	1	14
NIEDERL MANFRED	0	0	1	0	0	0	2	0	0	1	4
TABER HELMUT	0	1	0	1	1	0	3	1	1	2	10
WERTH OSWALD	0	1	0	2	0	0	3	2	0	0	8
GASSER FRANZ	0	0	0	4	2	0	0	2	0	0	8
LANZ JOHANN	1	1	0	0	0	0	0	3	0	0	5
MESSNER PETER	0	1	3	0	0	1	0	0	0	0	5
GALL PIAZZON INGRID	1	0	1	0	1	0	0	1	0	0	4
GRITSCH FRANZ	0	1	0	0	1	0	0	3	0	0	5
WINKLER TABER ANNELIES	0	0	0	2	0	0	1	0	0	0	3
MAIRL GUDRUN	0	0	0	0	0	0	0	1	0	1	2
ÜBERBACHER GREIF IRMA	0	0	0	2	0	0	0	0	0	0	2
SCHUSTER GÜNTHER	0	0	0	0	0	0	0	1	0	0	1
PALI GERHARD	0	0	0	0	0	0	1	0	0	0	1
WALDNER ELKE	0	0	0	0	0	0	1	0	0	0	1
PALLHUBER GÜNTER	0	0	0	0	0	1	0	0	0	0	1
SEIDNER KURT	0	0	0	0	1	0	0	0	0	0	1
PRUGGER PETER	0	0	0	0	0	0	1	0	0	0	1
SCHWIENBACHER XAVER	0	0	0	0	0	0	0	0	0	0	0
LANG ANDREAS	0	0	0	0	0	0	0	0	0	0	0
STOLL EDUARD	0	0	0	0	0	0	0	0	0	0	0
GUNSCH HOLGER	0	0	0	0	0	0	0	0	0	1	1
LAMPRECHT SILKE	0	0	0	0	0	0	0	0	0	0	0
BLAAS BENJAMIN JOSEF	0	0	0	0	0	0	0	0	0	0	0
ZÖSSMAYR THOMAS	0	0	0	0	0	0	0	0	0	0	0
STRICKER NATHALIE	0	0	0	0	0	0	0	0	0	0	0
MAIR STEGER ANNA	0	0	0	0	0	0	0	0	0	0	0
BRUNNER GEORG	0	0	0	0	0	0	0	0	0	0	0
GOLLER HEINZ	0	0	0	0	0	0	0	0	0	0	0
FRITZ FLORIAN STEFAN	0	0	0	0	0	0	0	0	0	0	0
GRABER JOHANN	0	0	0	0	0	0	0	0	0	0	0
<b>GESAMT/SOMMA</b>	<b>18</b>	<b>27</b>	<b>26</b>	<b>19</b>	<b>37</b>	<b>10</b>	<b>35</b>	<b>35</b>	<b>16</b>	<b>27</b>	<b>250</b>



**LANDTAGSWAHLEN 2008/ELEZIONI PROVINCIALI 2008**

**VORZUGSSTIMMEN/VOTI DI PREFERENZA**

**IL POPOLO DELLA LIBERTÀ BERLUSCONI**

<b>KANDIDAT/CANDIDATO</b>	<b>1</b>	<b>2</b>	<b>3</b>	<b>4</b>	<b>5</b>	<b>6</b>	<b>7</b>	<b>8</b>	<b>9</b>	<b>10</b>	<b>GESAMT/SOMMA</b>
URZI ALESSANDRO	10	32	19	14	19	1	3	11	14	7	130
BIANCOFIORE MICHAELA	9	26	16	10	20	3	7	11	14	7	123
MINNITI MAURO	2	15	4	2	8	0	6	6	7	3	53
VEZZALI MAURIZIO	4	11	6	2	6	3	5	6	1	0	44
SIGISMONDI ALBERTO	1	10	2	0	5	0	5	3	2	2	30
JANES ALEX	4	7	4	1	4	0	0	3	5	1	29
BORIN BRUNO	5	2	4	6	5	0	0	1	1	1	25
TAGNIN MARIO	2	5	3	0	3	3	4	0	2	0	22
STANCHER RENATO	1	2	5	1	6	0	0	1	1	0	17
ORIO ANCILLA PATRIZIA	4	2	3	1	2	0	3	0	1	1	17
VITALE MARIO	2	0	1	4	1	0	0	0	8	0	16
PONTECORVO FERNANDO	0	1	1	0	2	0	0	2	4	0	10
LILLO ENRICO	0	5	1	2	0	0	0	0	1	0	9
MURANO FRANCO	1	2	2	0	0	0	0	0	2	1	8
BOVA ANTONIO	1	1	0	4	1	0	0	0	1	0	8
TOMADA MARIATERESA	0	5	1	0	0	0	0	1	0	0	7
SEPPI WALTER	1	2	0	0	0	1	0	1	1	0	6
GAMBETTI VITANTONIO	2	1	1	0	0	0	0	0	1	0	5
CUTRUPI CARMELO	0	0	1	0	0	3	0	0	0	0	4
INGUSCIO DANIELE	0	0	1	1	1	0	0	0	0	0	3
SALARIS SABRINA	0	0	0	1	0	0	1	0	0	1	3
TALASSI FRANCESCA	0	1	0	0	0	0	1	0	0	1	3
DALL'ALDA LORETA	1	1	0	0	0	0	0	1	0	0	3
COCCA FRANCESCO PAOLO	0	0	0	0	0	0	0	2	0	0	2
BERLOFFA MASSIMO	0	0	0	1	0	0	1	0	0	0	2
PIZZO STEFANO	0	1	0	0	0	0	0	0	0	0	1
MAFRICI FRANCESCO	0	0	0	1	0	0	0	0	0	0	1
BERTOLUCCI PAOLO	0	0	0	1	0	0	0	0	0	0	1
MARAZZO SILVANA	0	1	0	0	0	0	0	0	0	0	1
CERA FLAVIO	0	0	0	0	0	0	0	0	0	0	0
NARDA GIANNI	0	0	0	0	0	0	0	0	0	0	0
PIRAS SALVATORE	0	0	0	0	0	0	0	0	0	0	0
AGOSTINI FABIO MARIA	0	0	0	0	0	0	0	0	0	0	0
PONTARELLI GIANNI	0	0	0	0	0	0	0	0	0	0	0
RUSSO GIANLUCA	0	0	0	0	0	0	0	0	0	0	0
<b>GESAMT/SOMMA</b>	<b>50</b>	<b>133</b>	<b>75</b>	<b>52</b>	<b>83</b>	<b>14</b>	<b>36</b>	<b>49</b>	<b>66</b>	<b>25</b>	<b>583</b>

**LANDTAGSWAHLEN 2008/ELEZIONI PROVINCIALI 2008**

**VORZUGSSTIMMEN/VOTI DI PREFERENZA**

**DEMOKRATISCHE PARTEI PD**

<b>KANDIDAT/CANDIDATO</b>	<b>1</b>	<b>2</b>	<b>3</b>	<b>4</b>	<b>5</b>	<b>6</b>	<b>7</b>	<b>8</b>	<b>9</b>	<b>10</b>	<b>GESAMT/SOMMA</b>
TOMMASINI CHRISTIAN	11	20	13	21	18	0	7	10	10	19	129
CLEVA MASSIMO	7	15	5	8	5	2	1	0	2	3	48
REPETTO BARBARA	5	6	4	2	5	1	1	2	4	7	37
BIZZO ROBERTO	0	7	6	6	2	6	1	1	2	3	34
CAVAGNA DIEGO	2	7	6	6	1	0	0	0	1	2	25
RANDI MAURO	0	3	3	7	1	6	0	0	0	1	21
STAFFLER UWE	1	2	2	2	3	1	0	5	0	2	18
CALÓ PIETRO	0	2	1	3	1	1	1	2	5	0	16
BANCARO MONICA	0	1	3	4	4	0	1	1	0	2	16
TEZZELE KRAMER SYBILLE	0	3	1	3	1	0	0	3	2	0	13
BERLOFFA GIOVANNI	1	1	1	2	3	0	0	3	0	1	12
KUSTATSCHER FIDENTI GABRIELLA	0	2	1	3	0	0	2	1	1	2	12
BERTI FRANCA	0	0	0	3	2	0	2	3	0	1	11
NONES GIORGIO	2	1	0	2	2	3	0	0	0	0	10
BARBORINI GIOVANNI	0	0	2	1	1	0	0	1	1	2	8
DI CESARO GIUSEPPINA	0	4	1	0	0	2	0	0	0	1	8
TROJER KARL	0	2	1	1	0	0	1	0	1	0	6
LEUZZI ROSALBA	0	2	0	0	2	1	0	0	0	0	5
MEIER HORAND	0	4	0	1	0	0	0	0	0	0	5
PEDRON GIANLORENZO	0	2	0	0	2	0	0	0	0	0	4
MATTEDI TSCHAGER FERNANDA	1	0	0	0	0	0	1	0	1	1	4
PEDRAZZA NIRVANA	1	0	0	0	2	0	0	0	0	0	3
SGARBOSSA STEFANO	0	1	0	0	1	0	0	1	0	0	3
REDAVID FRANCESCO	0	3	0	0	0	0	0	0	0	0	3
VOLANI DARIO	0	3	0	0	0	0	0	0	0	0	3
RIZZOLI NICOLETTA	0	0	0	0	1	0	0	0	2	0	3
WALTER KONRAD	0	0	0	0	1	0	1	0	0	0	2
LEDONNE SCUMACI MARIA	0	0	0	0	2	0	0	0	0	0	2
COSTANZO ANTONELLA	1	0	1	0	0	0	0	0	0	0	2
CASAZZA VALERIA	0	0	0	0	1	0	0	0	0	0	1
PILEGGI BRUNO	0	1	0	0	0	0	0	0	0	0	1
MARTELLI MARIA MANUELA	0	0	0	0	0	0	1	0	0	0	1
COSTANZO STEFANATI MARIA ROSA	0	0	0	0	0	0	0	0	0	0	0
PELLIZZARI MARCO	0	0	0	0	0	0	0	0	0	0	0
<b>GESAMT/SOMMA</b>	<b>32</b>	<b>92</b>	<b>51</b>	<b>75</b>	<b>61</b>	<b>23</b>	<b>20</b>	<b>33</b>	<b>32</b>	<b>47</b>	<b>466</b>

**LANDTAGSWAHLEN 2008/ELEZIONI PROVINCIALI 2008**

**VORZUGSSTIMMEN/VOTI DI PREFERENZA**

**DIE FREIHEITLICHEN**

<b>KANDIDAT/CANDIDATO</b>	<b>1</b>	<b>2</b>	<b>3</b>	<b>4</b>	<b>5</b>	<b>6</b>	<b>7</b>	<b>8</b>	<b>9</b>	<b>10</b>	<b>GESAMT/SOMMA</b>
LEITNER PIUS	65	106	83	83	90	83	104	66	84	91	<b>855</b>
MAIR ULLI	57	95	74	73	62	66	99	72	80	69	<b>747</b>
GAISER REINHARD	26	33	16	33	25	25	38	18	29	27	<b>270</b>
STOCKER SIGMAR	13	20	22	12	11	16	21	17	14	19	<b>165</b>
TINKHAUSER ROLAND	10	15	13	14	7	11	10	11	5	11	<b>107</b>
MALL KATRIN	4	7	9	4	9	2	10	4	8	9	<b>66</b>
MORANDELL STROZZEGA HELGA	4	6	2	2	6	4	5	1	6	2	<b>38</b>
EGGER THOMAS	2	4	4	5	6	1	6	2	2	6	<b>38</b>
KEMENATER ARNOLD	5	7	2	8	2	1	1	3	6	2	<b>37</b>
BLAAS WALTER	3	12	1	0	6	1	4	4	1	0	<b>32</b>
MALL ARNO	4	1	0	1	4	2	2	0	3	3	<b>20</b>
DEMANEGA MICHAEL	1	6	2	1	0	2	2	1	1	1	<b>17</b>
KOFLER SIMON	0	6	0	0	4	1	4	0	0	0	<b>15</b>
ANGERER OSWALD	1	2	3	0	0	0	2	2	3	0	<b>13</b>
TARFUSSER DASCHNER ULRIKE	2	1	0	0	2	0	4	1	0	1	<b>11</b>
KÖHL GÜNTHER	0	0	0	1	1	0	1	0	0	4	<b>7</b>
ZINMGERLE HANNES	1	2	0	0	0	0	1	1	0	0	<b>5</b>
SENONER MUSSNER ELEONORA	2	1	0	0	0	1	1	0	0	0	<b>5</b>
TAIBON LOIS	0	0	0	1	0	0	1	1	0	1	<b>4</b>
STECHEER JOSEF	2	0	0	0	0	0	0	2	0	0	<b>4</b>
POMELLA HORST	0	0	1	0	0	0	0	1	1	0	<b>3</b>
SEEBER CHRISTOPH	0	0	0	0	0	0	1	0	2	0	<b>3</b>
HUBER SCHÖPFER ALINA	0	0	0	0	0	0	1	0	0	1	<b>2</b>
FASOLT RUDOLF	0	0	0	0	1	1	0	0	0	0	<b>2</b>
HOLZER OSWALD	1	0	0	0	0	0	0	0	0	0	<b>1</b>
PREZZI LUKAS	0	0	1	0	0	0	0	0	0	0	<b>1</b>
KLEON PHILIPP	0	1	0	0	0	0	0	0	0	0	<b>1</b>
MERANER THOMAS EMANUEL	1	0	0	0	0	0	0	0	0	0	<b>1</b>
PIRHOFFER ANDRÉ	0	0	1	0	0	0	0	0	0	0	<b>1</b>
BRUGGER ANDREAS	0	0	0	0	0	0	0	0	0	1	<b>1</b>
LAZZERI ANDREA	1	1	1	1	0	1	2	2	1	0	<b>10</b>
EBERHÖFER ROMINA	0	1	0	0	1	0	0	0	1	0	<b>3</b>
KNOFLACH KARIN	0	1	0	0	2	1	0	0	1	0	<b>5</b>
HUBER RUDOLF	0	0	0	0	0	0	0	0	0	0	<b>0</b>
TSCHENETT ADALBERT	1	0	0	0	0	0	0	0	0	0	<b>1</b>
<b>GESAMT/SOMMA</b>	<b>206</b>	<b>328</b>	<b>235</b>	<b>239</b>	<b>239</b>	<b>219</b>	<b>320</b>	<b>209</b>	<b>248</b>	<b>248</b>	<b>2.491</b>

**LANDTAGSWAHLEN 2008/ELEZIONI PROVINCIALI 2008**  
**VORZUGSSTIMMEN/VOTI DI PREFERENZA**

**LANDTAGSWAHLEN 2008/ELEZIONI PROVINCIALI 2008**

**VORZUGSSTIMMEN/VOTI DI PREFERENZA**

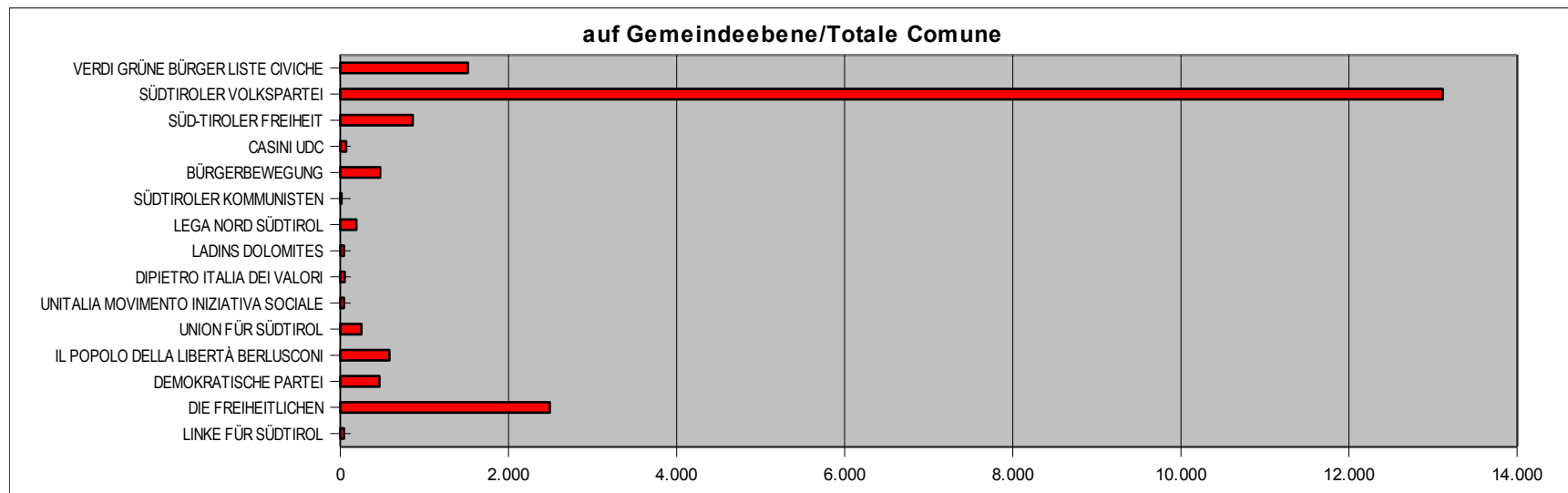
**LINKE FÜR SÜDTIROL**

<b>KANDIDAT/CANDIDATO</b>	<b>1</b>	<b>2</b>	<b>3</b>	<b>4</b>	<b>5</b>	<b>6</b>	<b>7</b>	<b>8</b>	<b>9</b>	<b>10</b>	<b>GESAMT/SOMMA</b>
BERTINAZZO ALESSANDRO	0	0	1	0	0	0	0	1	0	2	4
MARGHERI GUIDO	0	1	0	0	0	1	0	1	0	1	4
GALLETTI ORESTE	0	1	0	1	0	0	0	0	0	2	4
AUGSCHELLER DAVID	2	1	1	2	0	0	0	0	0	0	6
ZANELLA CRISTINA	0	0	1	0	0	0	0	1	0	1	3
MICIELLI ARDELIO	0	0	1	0	0	0	0	0	0	2	3
DI STASIO GINO	0	0	0	1	0	0	0	1	0	0	2
MOTTA LOREDANA	0	2	0	0	0	0	0	0	0	0	2
ALBERTINI FABRIZIO	1	1	1	0	0	0	0	0	0	0	3
CHISTÈ CLAUDIA	0	1	1	0	0	0	0	0	0	0	2
PAGANI STEFANO	0	0	1	0	0	0	0	0	0	0	1
OGGIANO STEFANO	0	0	0	0	0	0	0	0	0	1	1
CEOL ROBERTO	0	0	0	0	1	0	0	0	0	0	1
SORANZO ALESSANDRO	0	0	1	0	0	0	0	0	0	0	1
SIGMUND GABRIEL	0	1	0	0	0	0	0	0	0	0	1
GASSER MAMBELLI DOROTHEA	0	0	1	0	0	0	0	0	0	0	1
GABRIELLI RADAMES	0	0	0	0	0	1	0	0	0	0	1
COSTA RAISSA	0	0	0	0	0	0	0	0	1	0	1
DE MARTIN FLECCO PAOLO	0	0	0	0	0	0	0	0	0	0	0
PIZZINI FRANCO	0	0	0	0	0	0	0	0	0	0	0
PEDRATSCHER DEBORAH	0	0	0	0	0	0	0	0	0	0	0
ZORZI EUGENIO	0	0	0	0	0	0	0	0	0	0	0
TULIPANO ANNA MARIA	0	0	0	0	0	0	0	0	0	0	0
TOMI RENATA	0	0	0	0	0	0	0	0	0	0	0
TAGNIN ENZO	0	0	0	0	0	0	0	0	0	0	0
COSTANZO FEDERICA	0	0	0	0	0	0	0	0	0	0	0
LORENZANI BRZUNO	0	0	0	0	0	0	0	0	0	0	0
AZZOLINI ANGELO	0	0	0	0	0	0	1	0	0	0	1
MOLIN FERREMI ANNAMARIA	0	0	0	0	0	0	0	0	0	0	0
BIANCHI RENATA	0	0	0	0	0	0	0	0	0	0	0
MASTROPAOLO MARIA	0	0	0	0	0	0	0	0	0	0	0
BIASI WALTER	0	0	0	0	0	0	0	0	0	0	0
ORTOLAN ROBERTO	0	0	0	0	0	0	0	0	0	0	0
MOSCONI DANIELA	0	0	0	0	0	0	0	0	0	0	0
CHIOCCHETTI CARMEN	0	0	0	0	0	0	0	0	0	0	0
<b>GESAMT/SOMMA</b>	<b>3</b>	<b>8</b>	<b>9</b>	<b>4</b>	<b>1</b>	<b>2</b>	<b>1</b>	<b>4</b>	<b>1</b>	<b>9</b>	<b>42</b>

## LANDTAGSWAHLEN 2008/ELEZIONI PROVINCIALI 2008

### VORZUGSSTIMMEN PRO LISTE/VOTI DI PREFERENZA PER LISTA

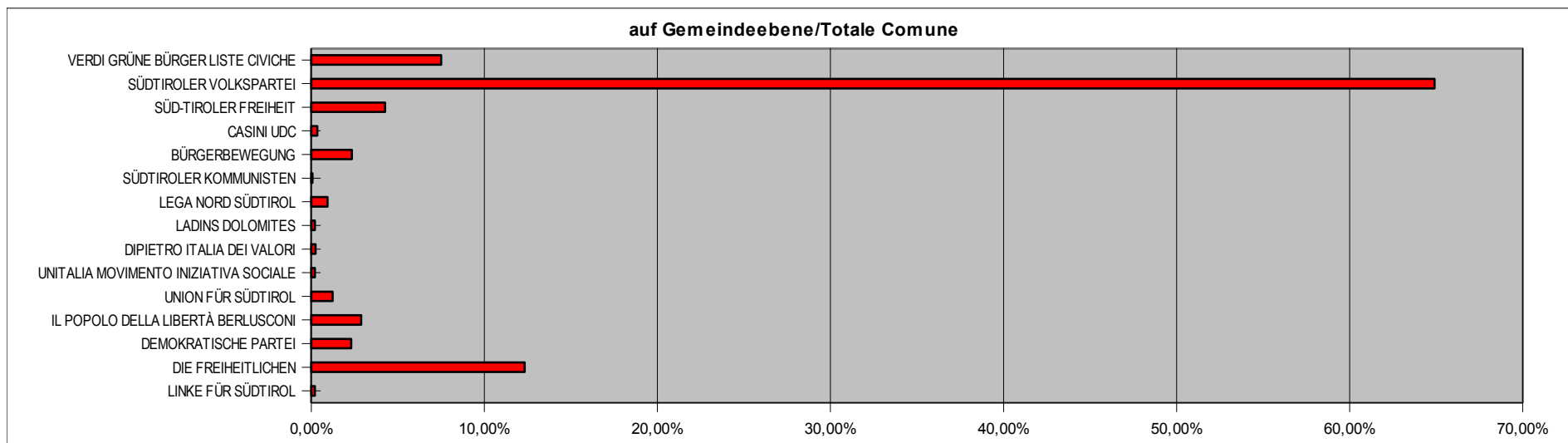
LISTE/LISTA	1	2	3	4	5	6	7	8	9	10	GESAMT/SOMMA
VERDI GRÜNE BÜRGER LISTE CIVICHE	173	169	203	89	144	125	171	153	99	191	1.517
SÜDTIROLER VOLKSPARTEI	1.218	1.352	1.277	1.006	981	1.405	1.886	1.286	1.253	1.451	13.115
SÜD-TIROLER FREIHEIT	97	93	89	61	115	83	117	79	40	87	861
CASINI UDC	4	14	14	5	9	1	5	6	10	2	70
BÜRGERBEWEGUNG	52	108	50	38	17	30	49	56	20	54	474
SÜDTIROLER KOMMUNISTEN	0	0	0	12	1	0	1	0	0	0	14
LEGA NORD SÜDTIROL	23	22	27	23	18	8	15	20	17	16	189
LADINS DOLOMITES	14	5	0	0	6	0	2	0	12	3	42
DIPIETRO ITALIA DEI VALORI	11	16	2	4	3	0	0	4	9	2	51
UNITALIA MOVIMENTO INIZIATIVA SOCIALE	6	1	6	7	9	0	0	5	4	5	43
UNION FÜR SÜDTIROL	18	27	26	19	37	10	35	35	16	27	250
IL POPOLO DELLA LIBERTÀ BERLUSCONI	50	133	75	52	83	14	36	49	66	25	583
DEMOKRATISCHE PARTEI	32	92	51	75	61	23	20	33	32	47	466
DIE FREIHEITLICHEN	206	328	235	239	239	219	320	209	248	248	2.491
LINKE FÜR SÜDTIROL	3	8	9	4	1	2	1	4	1	9	42
<b>GESAMT/SOMMA</b>	<b>1.907</b>	<b>2.368</b>	<b>2.064</b>	<b>1.634</b>	<b>1.724</b>	<b>1.920</b>	<b>2.658</b>	<b>1.939</b>	<b>1.827</b>	<b>2.167</b>	<b>20.208</b>



## LANDTAGSWAHLEN 2008/ELEZIONI PROVINCIALI 2008

### VORZUGSSTIMMEN PRO LISTE %/VOTI DI PREFERENZA PER LISTA %

LISTE/LISTA	1	2	3	4	5	6	7	8	9	10	GESAMT/SOMMA
VERDI GRÜNE BÜRGER LISTE CIVICHE	9,1%	7,1%	9,8%	5,4%	8,4%	6,5%	6,4%	7,9%	5,4%	8,8%	7,51%
SÜDTIROLER VOLKSPARTEI	63,9%	57,1%	61,9%	61,6%	56,9%	73,2%	71,0%	66,3%	68,6%	67,0%	64,9%
SÜD-TIROLER FREIHEIT	5,1%	3,9%	4,3%	3,7%	6,7%	4,3%	4,4%	4,1%	2,2%	4,0%	4,3%
CASINI UDC	0,2%	0,6%	0,7%	0,3%	0,5%	0,1%	0,2%	0,3%	0,5%	0,1%	0,3%
BÜRGERBEWEGUNG	2,7%	4,6%	2,4%	2,3%	1,0%	1,6%	1,8%	2,9%	1,1%	2,5%	2,3%
SÜDTIROLER KOMMUNISTEN	0,0%	0,0%	0,0%	0,7%	0,1%	0,0%	0,0%	0,0%	0,0%	0,0%	0,1%
LEGA NORD SÜDTIROL	1,2%	0,9%	1,3%	1,4%	1,0%	0,4%	0,6%	1,0%	0,9%	0,7%	0,9%
LADINS DOLOMITES	0,7%	0,2%	0,0%	0,0%	0,3%	0,0%	0,1%	0,0%	0,7%	0,1%	0,2%
DIPIETRO ITALIA DEI VALORI	0,6%	0,7%	0,1%	0,2%	0,2%	0,0%	0,0%	0,2%	0,5%	0,1%	0,3%
UNITALIA MOVIMENTO INIZIATIVA SOCIALE	0,3%	0,0%	0,3%	0,4%	0,5%	0,0%	0,0%	0,3%	0,2%	0,2%	0,2%
UNION FÜR SÜDTIROL	0,9%	1,1%	1,3%	1,2%	2,1%	0,5%	1,3%	1,8%	0,9%	1,2%	1,2%
IL POPOLO DELLA LIBERTÀ BERLUSCONI	2,6%	5,6%	3,6%	3,2%	4,8%	0,7%	1,4%	2,5%	3,6%	1,2%	2,9%
DEMOKRATISCHE PARTEI	1,7%	3,9%	2,5%	4,6%	3,5%	1,2%	0,8%	1,7%	1,8%	2,2%	2,3%
DIE FREIHEITLICHEN	10,8%	13,9%	11,4%	14,6%	13,9%	11,4%	12,0%	10,8%	13,6%	11,4%	12,3%
LINKE FÜR SÜDTIROL	0,2%	0,3%	0,4%	0,2%	0,1%	0,1%	0,0%	0,2%	0,1%	0,4%	0,2%
<b>GESAMT/SOMMA</b>	<b>100,0%</b>	<b>100,0%</b>	<b>100,0%</b>	<b>100,0%</b>	<b>100,0%</b>	<b>100,0%</b>	<b>100,0%</b>	<b>100,0%</b>	<b>100,0%</b>	<b>100,0%</b>	<b>100,0%</b>



# LANDTAGSWAHLEN 2008/ELEZIONI PROVINCIALI 2008

## WAHLVERGLEICH/CONFRONTO VOTAZIONI

### Listenstimmen/Voti di lista

Liste/Lista	2008	2008%	2003	2003%
VERDI GRÜNE BÜRGER LISTE CIVICHE	678	7,68%	848	9,91%
SÜDTIROLER VOLKSPARTEI	4.677	52,97%	5.349	62,50%
SÜD-TIROLER FREIHEIT	481	5,45%	---	0,00%
CASINI UDC	55	0,62%	---	0,00%
BÜRGERBEWEGUNG	296	3,35%	---	0,00%
SÜDTIROLER KOMMUNISTEN	13	0,15%	30	0,35%
LEGA NORD SÜDTIROL	177	2,00%	30	0,35%
LADINS DOLOMITES	25	0,28%	32	0,37%
DIPIETRO ITALIA DEI VALORI	49	0,55%	---	0,00%
UNITALIA MOVIMENTO INIZIATIVA SOCIALE	49	0,55%	52	0,61%
UNION FÜR SÜDTIROL	184	2,08%	692	8,09%
IL POPOLO DELLA LIBERTÀ BERLUSCONI	352	3,99%	---	0,00%
DEMOKRATISCHE PARTEI PD	314	3,56%	---	0,00%
DIE FREIHEITLICHEN	1.218	13,80%	421	4,92%
LINKE FÜR SÜDTIROL	29	0,33%	---	0,00%
weiss/bianchi	74	0,84%	96	1,12%
ungültig/nulli	158	1,79%	222	2,59%
andere Listen/altre Liste			787	9,19%
<b>GESAMT/SOMMA</b>	<b>8.829</b>	<b>100,00%</b>	<b>8.559</b>	<b>100,00%</b>

### Wahlbeteiligung/quota di partecipazione

	2008	2008%	2003	2003%
Eingetragene Wähler/Elettori iscritti	10.670	100,00%	10.249	100,00%
Gewählt/Hanno votato	8.829	82,75%	8.559	83,51%
Gültige Stimmzettel/Schede valide	8.597	80,57%	8.241	80,41%



**LANDTAGSWAHLEN 2008/ELEZIONI PROVINCIALI 2008 - SEKTIONEN/SEZIONI**

<p><b>SEKTION 1 - Grundschule St. Michael - Hans-Weber-Tyrol- Platz 1 – (Erdgeschoß)</b>                  Kapuzinerstraße, Krafußweg, Maderneidstraße, Bergweg (St.Michael), Goldgasse, Platzlweg (St. Michael), Johann-Georg-Plazer-Straße, St.-Anna-Weg, St.Michael-Platz, Rathausplatz, Sonnengasse, Josef-Innerhofer-Straße, Hans-Weber-Tyrol-Platz, Laubendurchgang, Ohne festen Wohnsitz</p>	<p><b>SEZIONE 1 - Scuola Elementare S. Michele - Piazza Hans Weber Tyrol 1 - (piano terra)</b>                  Via Cappuccini, Strada Gravosa, Via Maderneto, Via Monte (S.Michele), Via dell'Oro, Strada della Piazzetta (S.Michele), Via Johann Georg Plazer, Via S.Anna, Piazza S.Michele, Piazza Municipio, Vicolo del Sole, Via Josef Innerhofer, Piazza Hans Weber Tyrol, Passaggio Portici, senza fissa dimora</p>
<p><b>SEKTION 2 - Grundschule St. Michael - Hans-Weber-Tyrol- Platz 1 – (Erdgeschoß)</b>                  Kalterer Straße, Maria-Rast-Weg, Unteralberweg, Bahnhofplatz, Bahnhofstraße, Hans-Nicolussi-Leck-Straße, Steinackerweg, Weingüterweg, Albertus-Magnus-Platz</p>	<p><b>SEZIONE 2 - Scuola Elementare S. Michele - Piazza Hans Weber Tyrol 1 - (piano terra)</b>                  Via Caldaro, Strada Madonna del Riposo, Via dell'Olmo, Piazza Stazione, Via Stazione, Via Hans Nicolussi-Leck, Via Steinacker, Via dei Vigneti, Piazza Albertus Magnus</p>
<p><b>SEKTION 3 - Grundschule St. Michael - Hans-Weber-Tyrol- Platz 1 – (Erdgeschoß)</b>                  Bozner Straße (St.Michael), Girlaner Straße (St.Michael), Sillweg, Montiggler Straße (St.Michael), St.Antonius-Weg, Wartlweg, Handwerkerstraße, Umfahrungsstraße (St.Michael), Montiggler Straße (Montiggl)</p>	<p><b>SEZIONE 3 - Scuola Elementare S. Michele - Piazza Hans Weber Tyrol 1 - (piano terra)</b>                  Via Bolzano (S.Michele), Via Cornaiano (S.Michele), Strada Sill, Via Monticolo (S.Michele), Strada S.Antonio, Via Wartl, Via Artigiani, Strada di Circonvallazione (S.Michele), Via Monticolo (Monticolo)</p>
<p><b>SEKTION 4 - Grundschule St. Michael - Hans-Weber-Tyrol- Platz 1 – (Erdgeschoß)</b>                  Reinspergweg, Schulthauer Weg, Matschatscher Weg (St.Michael), Turmbachweg, Kreuzweg, Lambrechtsweg, Rittsteinweg, Kastanienweg</p>	<p><b>SEZIONE 4 - Scuola Elementare S. Michele - Piazza Hans Weber Tyrol 1 - (piano terra)</b>                  Strada Castel Monteriva, Strada Castel Palù, Strada Masaccio (S.Michele), Via Rio della Torre, Crocevia, Via Lambrecht, Via Rittstein, Via delle Castagne</p>
<p><b>SEKTION 5 - Grundschule St. Michael - Hans-Weber-Tyrol- Platz 1 – (Erdgeschoß)</b>                  Andreas-Hofer-Straße, Pigenoer Weg, Badlweg, Max-Sparer-Straße, Stanis-Gruber-Straße</p>	<p><b>SEZIONE 5 - Scuola Elementare S. Michele - Piazza Hans Weber Tyrol 1 - (piano terra)</b>                  Via Andreas Hofer, Via Piganò, Via Badl, Via Max Sparer, Via Stanis Gruber</p>
<p><b>SEKTION 6 - Grundschule St. Pauls - (Erdgeschoß)</b>                  Matschatscher Weg (St.Pauls), Bergweg (St.Pauls), Kreuzsteinweg, St.Justina-Weg, Aichweg, Buchwaldweg, Perdoniger Weg, Gaider Weg</p>	<p><b>SEZIONE 6 - Scuola Elementare S. Paolo - Via della Scuola 4 - (piano terra)</b>                  Strada Masaccio (S.Paolo), Via Monte (S.Paolo), Strada Sasso Croce, Strada S.Giustina, Strada Aica, Strada Faedo d'Appiano, Strada Pradonico, Strada Gaido</p>
<p><b>SEKTION 7 - Grundschule St. Pauls - (Erdgeschoß)</b>                  Feldweg, Missianer Weg (St.Pauls), Platzlweg (St.Pauls), Unterrainer Straße, Nußbaumerweg, Hocheppaner Weg, Missianer Weg (Missian), St.Apollonia Straße, Huberfeldweg</p>	<p><b>SEZIONE 7 - Scuola Elementare S. Paolo - Via della Scuola 4 - (piano terra)</b>                  Strada dei Campi, Via Missiano (S.Paolo), Strada della Piazzetta (S.Paolo), Strada Riva di Sotto, Via Nussbaumer, Strada Castel d'Appiano, Via Missiano (Misiano), Via S.Apollonia, Strada Huberfeld</p>
<p><b>SEKTION 8 - Grundschule St. Pauls - (Erdgeschoß)</b>                  Bozner Straße (St.Pauls), Schloß-Warth-Weg, Paulser Platz, Paulser Straße, Luziafeldweg, Schulweg, Weinstraße (Frangart), Bozner Straße (Frangart), Sigmundskroner Straße, Sepp-Kerschbaumer-Straße, Pillhofstraße (Frangart), Mitterlingweg, Umfahrungsstraße (Frangart), Pillhofstraße (Unterrain)</p>	<p><b>SEZIONE 8 - Scuola Elementare S. Paolo - Via della Scuola 4 - (piano terra)</b>                  Via Bolzano (S.Paolo), Strada Castel Guardia, Piazza S.Paolo, Via S.Paolo, Strada Luziafeld, Via della Scuola, Strada del Vino (Frangarto), Via Bolzano (Frangarto), Strada Castelfirmiano, Via Sepp Kerschbaumer, Via Pillhof (Frangarto), Via Mitterling, Strada di Circonvallazione (Frangarto), Via Pillhof (Riva di Sotto)</p>
<p><b>SEKTION 9 - Jesuheim Girlan - Jesuheimstraße 24 – (Erdgeschoß)</b>                  Weißhausweg (St.Michael), Weinstraße (Girlan), Markthofweg, Jesuheimstraße, Schreckbichler Weg, Runggweg, St.Martin-Straße, Pranzollweg</p>	<p><b>SEZIONE 9 - Casa del Gesù Cornaiano - Via Casa del Gesù 24 - (piano terra)</b>                  Via Weishaus (S.Michele), Strada del Vino (Cornaiano), Strada Belvedere, Via Casa di Gesù, Strada Colte-renzio, Strada Ronco, Via S.Martino, Via Pranzoll</p>
<p><b>SEKTION 10 - Grundschule Girlan - Girlaner Straße 3 – (Tiefparterre)</b>                  Mühlweg (St.Pauls), Pfarrgasse, Bildstöcklweg, Girlaner Straße (Girlan), Mühlweg (Girlan), Marktstraße, Lammweg, Girlaner Platz, St.Florian-Straße, St.Sebastian-Straße, Naunweg, Am Eichamt,</p>	<p><b>SEZIONE 10 - Scuola Elementare Cornaiano - Via Cornaiano 3 – (seminterrato)</b>                  Via Molino (S.Paolo), Vicolo della Parrocchia, Via del Capitello, Via Cornaiano (Cornaiano), Via Molino (Cornaiano), Via della Fiera, Via Lamm, Piazza Cornaiano, Via S.Floriano, Via S.Sebastiano, Strada Naun, Via Eichamt</p>